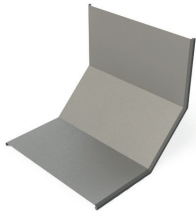
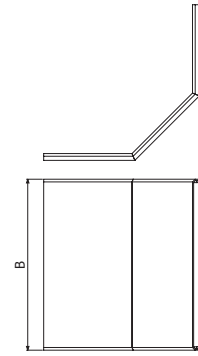




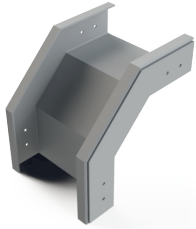
**TCCBPI**



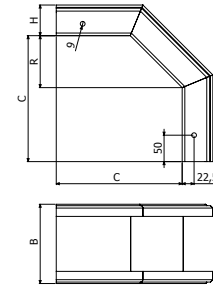
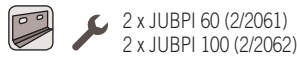
	B		PVC M1	
	mm	inch	REF.	kg/ud
TCCBPI 60X100	100	4"	2/5202	0,18
TCCBPI 60X150	150	6"	2/5203	0,24
TCCBPI 60X200	200	8"	2/5204	0,37
TCCBPI 60X300	300	12"	2/5205	0,52
TCCBPI 100X200	200	8"	2/5207	0,56
TCCBPI 100X300	300	12"	2/5208	0,61
TCCBPI 100X400	400	16"	2/5209	0,87
TCCBPI 100X600	600	24"	2/5210	1,04



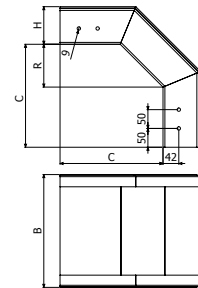
**CXBPI**



	H		B		C		R		PVC M1	
	mm	inch	mm	inch	mm	inch	mm	inch	REF.	kg/ud
CXBPI 60X100	60	2 3/8"	100	4"	240	9 1/2"	100	4"	2/1180	0,39
CXBPI 60X150	60	2 3/8"	150	6"	240	9 1/2"	100	4"	2/1181	0,49
CXBPI 60X200	60	2 3/8"	200	8"	240	9 1/2"	100	4"	2/1182	0,59
CXBPI 60X300	60	2 3/8"	300	12"	240	9 1/2"	100	4"	2/1183	0,81
CXBPI 100X200	100	4"	200	8"	275	10 5/6"	115	4 5/8"	2/5192	0,88
CXBPI 100X300	100	4"	300	12"	275	10 5/6"	115	4 5/8"	2/5193	1,11
CXBPI 100X400	100	4"	400	16"	275	10 5/6"	115	4 5/8"	2/1184	1,48
CXBPI 100X600	100	4"	600	24"	275	10 5/6"	115	4 5/8"	2/4707	2,00



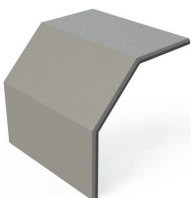
H60



H100



**TCXBPI**



	B		PVC M1	
	mm	inch	REF.	kg/ud
TCXBPI 60X100	100	4"	2/5211	0,22
TCXBPI 60X150	150	6"	2/5212	0,30
TCXBPI 60X200	200	8"	2/5213	0,49
TCXBPI 60X300	300	12"	2/5214	0,65
TCXBPI 100X200	200	8"	2/5215	0,75
TCXBPI 100X300	300	12"	2/5216	0,82
TCXBPI 100X400	400	16"	2/5217	1,17
TCXBPI 100X600	600	24"	2/5218	1,39

